

inFinitiPRO
by **CONAIR**™

Get a perfect curl...



...every time.



Curl
Secret™

Instruction & Styling Guide

Model CD203RC - All Versions

IMPORTANT SAFETY INSTRUCTIONS

When using electrical appliances, especially when children are present, basic safety precautions should always be taken, including the following:

READ ALL INSTRUCTIONS BEFORE USING ***KEEP AWAY FROM WATER***

DANGER - Any appliance is electrically live even when the switch is off. To reduce the risk of death by electric shock:

1. **Always unplug appliance immediately after using.**
2. Do not use while bathing or in the shower.

3. Do not place or store appliance where it can fall or be pulled into a tub or sink.
4. Do not place in, or drop into, water or other liquids.
5. If an appliance falls into water, unplug it immediately. **Do not reach into the water.**

WARNING - To reduce the risk of burns, electrocution, fire, or injury to persons:

1. **This appliance should never be left unattended when plugged in.**
2. **Do not pull, twist, or wrap line cord around appliance.**
3. This appliance should not be used by, on or near children or individuals with certain disabilities.
4. Use this appliance only for its intended use, as described in this manual. Do not use attachments not recommended by the manufacturer.

5. Never operate this appliance if it has a damaged cord or plug, if it is not working properly or if it has been dropped or damaged, or dropped into water. Return the appliance to an authorized service center for examination and repair.

6. Keep the cord away from heated surfaces.

7. Never use while sleeping.

8. Never drop or insert any object into any opening or hose.

9. Do not use outdoors or operate where aerosol (spray) products are being used or where oxygen is being administered.

10. Unit is hot when in use. Do not let heated surface touch eyes or skin.

11. Do not place the heated unit directly on any surface while it is operating.

12. Do not use an extension cord with this appliance.

13. The opening of the appliance is hot when in use. Do not put fingers or other objects into the opening at any time.

14. Do not touch hot surfaces of the appliance. Use handles or knobs.

15. Do not attempt to touch the housing of your appliance near the curl chamber, as it is hot when in use.

16. In the event the appliance is left switched on it will automatically shut off after 60 minutes. If you wish to continue using the appliance after this time, simply slide the switch to "0" position and then slide the switch to the relevant setting to turn the power on.

SAFETY INSTRUCTIONS

1. Do not use the unit if it is damp or if your hands are wet.
2. **WARNING:** Polyethylene bags containing this product or its packaging can be dangerous. To avoid the risk of suffocation, keep these bags out of the reach of babies and children. A polyethylene bag is not a plaything.
3. **WARNING:** Do not use this appliance near bathtubs, showers, basins, or other vessels containing water.
4. If the appliance is used in a bathroom, unplug it after use. Leaving the appliance near a source of water may be dangerous, even if the appliance is off. For additional protection, the installation of a residual current device (RCD) having a rated residual operating current not exceeding 30 mA is advisable in the electrical circuit supplying the bathroom. Ask your electrician for advice.
5. Do not immerse appliance in water or any other liquid.
6. Stop using the appliance immediately if the cord is damaged. The power supply cord should not be replaced



by the end user. The power supply cord should only be replaced by the manufacturer's authorized importer (or, in the United States and Canada, by an authorized Service Center).

7. Do not leave the appliance unattended while it is plugged in or in use.
8. Do not let the appliance's hot surface touch eyes or skin.
9. This appliance is not intended for use by persons (including children) with reduced physical, sensory, or mental capabilities, or lack of experience or knowledge, unless they have been given supervision or instructions concerning use of the appliance by a person responsible for their safety. Children should be supervised to ensure they do not play with appliance.
10. Allow the appliance to cool before storing.
11. After use, do not wind the cord around the appliance as this may damage it. Instead roll the cord up loosely and let it rest by the side of the appliance.

SAVE THESE INSTRUCTIONS

OPERATING INSTRUCTIONS

This styler is intended for household use. Use on Alternating Current (60 Hz) only. This unit is designed to be operated at 125VAC.

This appliance has a polarized plug (one blade is wider than the other). As a safety feature, this plug will fit in a polarized outlet only one way. If the plug does not fit fully in the outlet, reverse the plug. If it still does not fit, contact a qualified electrician. Do not attempt to defeat this safety feature.

TO CURL HAIR

Hair should be clean, completely dry and combed before you use the curling device. Plug into an electrical outlet and turn on the switch. **The red LED will blink while Curl Secret is heating up. Red light must stop blinking and be steady before curling hair.**

WARNING: The styler's tourmaline ceramic-coated curl chamber will get very hot within a few seconds and should not be placed in contact with the skin after the styler has been turned on.

The secret to Curl Secret is how easy it makes creating the perfect curl – a tight spiral, a big loose curl, even a relaxed wave – one after another! Hair goes in, curl comes out. It's that simple.

For best results, start with freshly washed and dried hair.

If you are curling the lower layers first, you might want to clip some hair out of the way.

TO CURL HAIR (cont.)

First, decide what type of curl you'd like – spirals or tighter curls, which can be shaped into a vintage chic style, or bigger curls or relaxed waves, which are beautiful on their own, and can be tousled into a natural “undone” look.

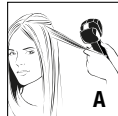
For spirals or tighter curls, choose the high heat setting and the 10- or 12-second timer setting.

For a looser curl or wave, we recommend the low setting and the 8- or 10-second timer setting.

As you use this innovative new styler, you'll discover the settings that let you best create the curls you want.

Remember: Before starting, make sure the temperature indicator light has stopped blinking.

1. Begin by carefully combing through hair to smooth it. Then take a ½ in. to 1 in. section (Fig. A).



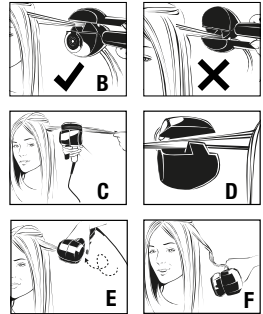
2. Please note the styler must be positioned into the hair with the opening of the curl chamber facing toward the head (Figure B).

3. Position the styler where you want the curl to start. The hair section must be straight, and placed neatly through the center of the hair guide (Fig. C and D).

4. Once the hair is in place, let go of the hair section and close the handle to allow the hair to be automatically taken into the curl chamber (Fig. E).

5. Open the Curl Secret and gently pull it away from the head to release a perfect curl (Fig. F)! Let it cool in place for a minute to set the curl. Quick heat-up and recovery, and Curl Secret's fully automatic curling technology, let you make consistently perfect curls – one after another – effortlessly!

It's a revolutionary new way to curl your hair. Fast, easy, and always perfect, curl after curl.



NOTE: Curl Secret's new brushless motor technology uses magnets instead of brushes to sense any change in speed, and turns itself off as an added safety feature and to ensure tangle-free curling action. Minimizes weight, maximizes curl control, and significantly extends the life of your appliance.

NOTE: If you continue to hold the hair section after closing the handle, Curl Secret will stop and beep to indicate that you must release the tension on the hair. If you have taken too much hair, or hair is not neatly going through the center of the appliance, the Curl Secret will again stop and beep to indicate a problem. This safety feature ensures there will be no tangles.

- The hair is automatically drawn into the ceramic curl chamber, where it is softly held and heated from all directions to effortlessly form the curl.
- The automatic beep indicator will start as soon as the handles are closed together. There will be a series of individual beeps. Hold the styler still, with the handles held together, until the end of the individual beeps. There will then be four quick beeps in succession. This indicates that the time is up and you can remove the styler from your hair.

NOTE: Always release the handles first to set the curl free; if you pull away before you open the handles, the curl will be straightened out.

- To allow the curl to set, do not comb or brush the hair until it cools.
- Repeat around the head until you have the amount of curls desired.

ADDED FEATURES

Curl Secret comes with 3 functions for added safety and energy savings:

Auto Shut-Off: If the appliance is switched on for more than 60 minutes continuously, it will automatically switch off. If you wish to continue using the appliance, simply slide the switch to the "0" position and then slide the switch to the relevant setting to turn the power on.

Sleep Mode: Energy efficient – after 20 minutes of idle time, temperature drops to around 150°C/300°F.

Motion Sensor: Ends sleep mode and reheats to selected temperature when handle is closed.

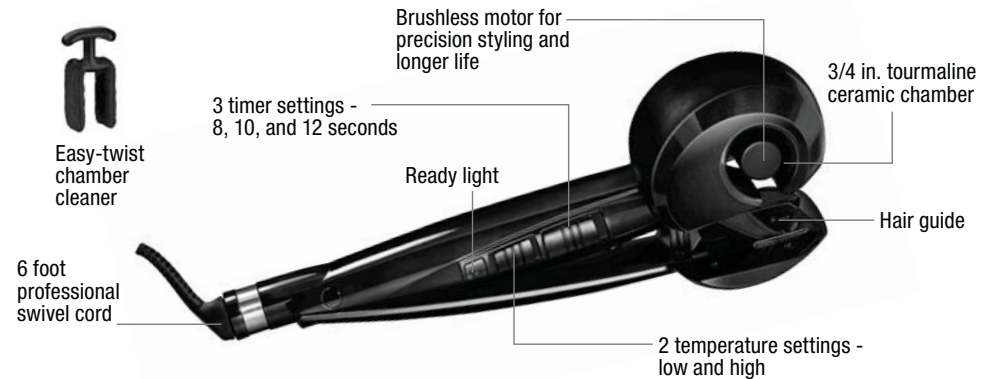
NOTE: Curl chamber will be hot to the touch.

GETTING TO KNOW YOUR CURL SECRET

Effortlessly create long-lasting beautiful curls, with Conair Curl Secret. Hair is automatically drawn into the tourmaline ceramic curl chamber where it is softly held and heated from all directions to effortlessly form the curl. Then, simply release. The result is beautiful, free-flowing curls.

Features:

- Brushless motor for precision styling and longer life
- Auto beep indicator
- Safety tangle feature
- 30-second instant heat
- Sleep mode
- Motion sensor
- Auto off



GETTING STARTED

The styler's two unique high-heat temperature settings and Instant Heat technology provide styling versatility for all hair types. If you have fine hair, the lower temperature will provide the best results. If you have thick, wavy or hard-to-curl hair, keep the heat setting on high. Create a variety of curls with different combinations of heat and time!

CURL TYPE	TEMP. CONTROL	TIMER
LOOSE CURLS	LOW	8 or 10
MEDIUM CURLS	LOW or HIGH	10
TIGHT CURLS	HIGH	10 or 12



Loose Curls



Medium Curls



Tight Curls

THE NEW TOURMALINE CERAMIC EASY-GLIDE STYLER

The Curl Secret has a tourmaline ceramic easy-glide coated surface, the newest technology. This means it's not only simpler to clean off styling product residue, etc. after each use, but you'll find that hair glides easily over the coated surface of the curl chamber as you're curling. The tourmaline ceramic coated surface also helps smooth down flyaways and frizzies.

It evenly distributes heat so that the style you create has a salon-perfect, silky smooth, shining finish. Hair also slips right through the curl chamber after it's curled.

The new Tourmaline Ceramic™ technology makes styling your hair easier and the results more professional.

Never leave your styler on and unattended. However, should you fail to turn the styler off, it will shut itself off automatically within 60 minutes.

USING INSTANT HEAT, THE 2 HIGH HEAT TEMPERATURE SETTINGS & UNIFORM HEAT RECOVERY SYSTEM

This styler features a high-performance heater that maintains constant temperature during use for precision styling. This Instant Heat technology has two high heat temperature settings. There is a temperature that's gentle and safe for every type of hair, from the finest to the curliest and most resistant, and helps you create the look you want. And that's not all. Conair's professional salon standards of engineering provide you with a uniform and improved heat recovery system that maintains the iron at constant temperatures. There is a constant surge of power to ensure that heat is continuously and quickly delivered for optimal styling results, unlike other units, which lose heat during use. This provides consistent styling power so that every strand of your hair is set with the same level of heat and comes out the same way for a perfect finish.

Curl Secret is energy efficient. The sleep mode function drops the styler's temperature to 300°F if styler remains idle after 20 minutes. And auto shut-off turns the Curl Secret off after 60 minutes.

USER MAINTENANCE

Your styler is virtually maintenance free. No lubrication is needed. Keep all vents and openings clear of dirt and dust. If cleaning becomes necessary, disconnect the unit from the power source, allow to cool and wipe exterior with a cloth. If any abnormal condition occurs, unplug the unit, allow it to cool, and return it for repair to an authorized service representative only. No repairs should be attempted by the consumer.

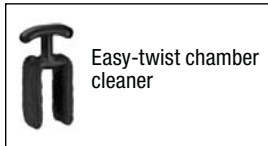
CAUTION

NEVER allow the power supply cord to be pulled, twisted, or severely bent. Never wrap the cord tightly around the appliance. Damage will occur at the high flex point of entry into the appliance, causing it to rupture and short circuit. Inspect the cord frequently for damage. Stop use immediately if damage is visible or if unit stops or operates intermittently.

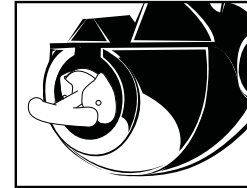
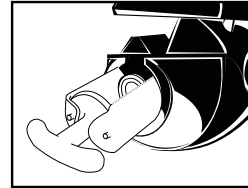
STORAGE

When not in use, your appliance is easy to store. Allow appliance to cool, then simply store out of reach of children in a safe, dry location. Do not jerk or strain cord at plug connections. Do not wrap the line cord around the appliance. Allow the cord to hang or lie loose and straight at the point of entry into the appliance.

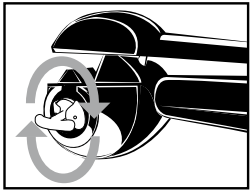
TO CLEAN CHAMBER:



- Ensure the appliance is switched off, unplugged and cool.
- Lightly dampen the cleaning tool with warm water and mild detergent or soap.
- Insert the tool fully into the curl chamber cavity as per the diagrams below.



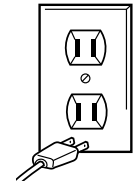
- Rotate the tool around the curl chamber to remove any build-up of product.



- Ensure the appliance has dried thoroughly before re-using.
- The cleaning tool can be used numerous times; just remove the felt pads, rinse them in warm soapy water and leave to dry before using again.

**WARNING:
IF YOU THINK
THE POWER IS OFF
WHEN THE SWITCH
IS OFF,
YOU'RE WRONG.**

KEEP AWAY FROM WATER



Everyone knows that electricity and water are a dangerous combination. But did you know that an electric appliance is still electrically live even if the switch is off? If the plug is in, the power is on. So when you are not using your appliances, keep them unplugged.

ALWAYS UNPLUG SMALL APPLIANCES

LIMITED FIVE YEAR WARRANTY

Conair will repair or replace (at our option) your unit free of charge for 60 months from the date of purchase if the appliance is defective in workmanship or materials.

To obtain service under this warranty, return the defective product to the service centre listed below that is nearest you, together with your purchase receipt and \$7.50 for postage and handling. In the absence of a purchase receipt, the warranty period shall be 60 months from the date of manufacture.

ANY IMPLIED WARRANTIES, OBLIGATIONS OR LIABILITIES, INCLUDING BUT NOT LIMITED TO THE IMPLIED WARRANTY OF MERCHANTABILITY AND FITNESS FOR A PARTICULAR PURPOSE, SHALL BE LIMITED IN DURATION TO THE 60 MONTHS DURATION OF THIS WRITTEN, LIMITED WARRANTY.

IN NO EVENT SHALL CONAIR BE LIABLE FOR ANY SPECIAL, INCIDENTAL, OR CONSEQUENTIAL DAMAGES FOR BREACH OF THIS OR ANY OTHER WARRANTY, EXPRESS OR IMPLIED, WHATSOEVER.

This warranty gives you specific legal rights, and you may also have other rights, which vary from province to province.

Due to continued product enhancements, the product featured may differ slightly from the actual product purchased.

SERVICE CENTER

**Conair Consumer Products ULC
100 Conair Parkway
Woodbridge, ON L4H 0L2**

©2013 Conair Consumer Products ULC

13CN145441

Patent Pending

For more information on any Conair product call:

1-800-472-7606

Visit our Web site: www.conaircanada.ca

Consumer Call Centre E-mail:

Consumer_Canada@Conair.com

IB-12466